

Remove Potentially Harmful Content

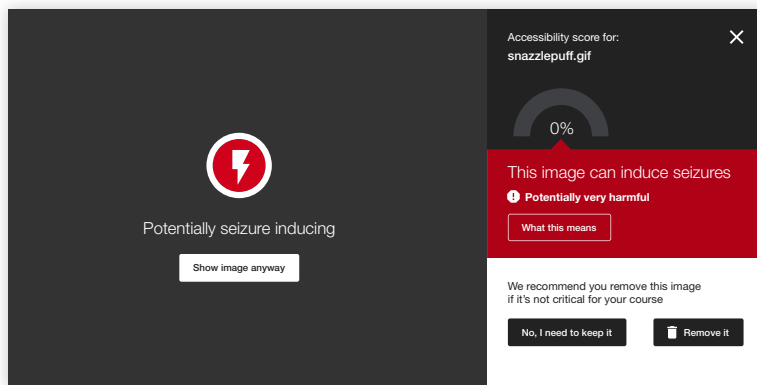
Digital media can trigger unexpected responses from students

Ally Micro-Learning

The Internet is full of fun content, and adding creative media elements to your course can boost student engagement. However, GIFs and other rapid-movement or flickering media- even overly complex still images- have the potential to trigger seizures or other harmful responses in students. Ally identifies these files, and scores them as “Red, 0% accessible.” Follow the instructions to help ensure all students can safely interact with your course content.

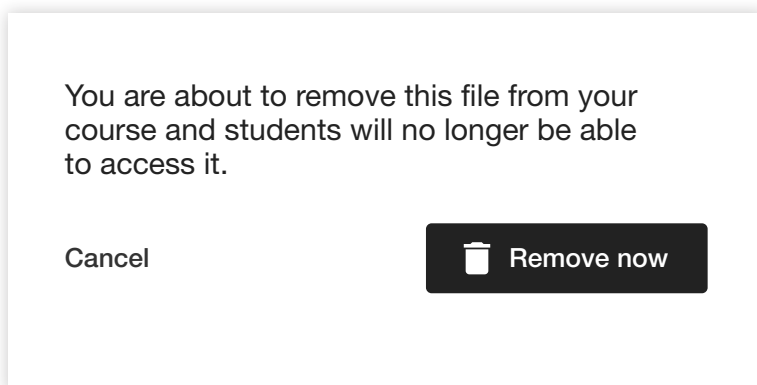
Scenario: **You click a red indicator, its “potentially harmful”**

1



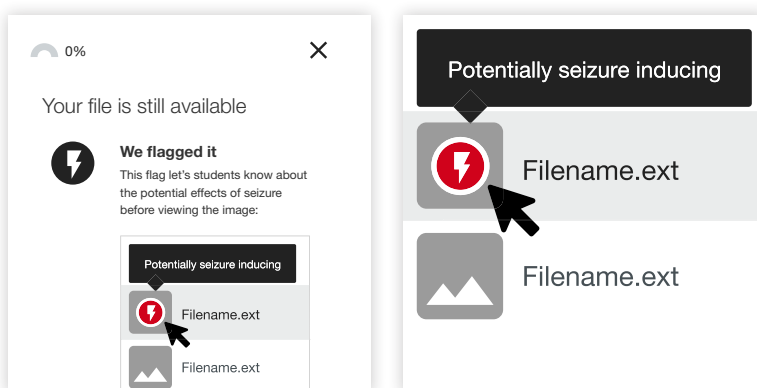
You’re adding some visual media to your course to embed later in a discussion, and you notice a red Ally indicator next to the file. You click the indicator, and see that Ally has marked the file as “potentially harmful.” You have two choices:

2



The recommended choice from an inclusion perspective is to remove the file, and replace it with something similar and less harmful. This will ensure that all your students can engage with the content safely.

3



If the content is essential to your course, Ally will flag the content and alert students before opening the file. In case the students are susceptible to seizure from flashing or visually complex images, they will receive a warning from Ally before opening.

Learn more about Anthology Ally at:

<https://www.anthology.com/products/teaching-and-learning/learning-effectiveness/anthology-ally>